

TYPE

.....
VTC**CONDENSATION RETURN UNITS**

**photo
coming
soon**

Turbine condensate return units, 1/4 to 3/4
HP, 10 and 15 gallon cast iron receivers.

HIGHLIGHTS

-  Cast Iron or Steel Receivers
-  1750 RPM Operation
-  To 10,000 sq. ft. E.D.R.
-  To 50 psi Discharge Pressure
-  Completely Assembled
-  Controls Mounted & Wired

FEATURES

RECEIVER: Low inlet type receivers are of heavy, close-grained cast iron construction. No foundation bolts are required. May be installed in shallow pits or on floor level. Available in 10, 15 and 30 gallon capacities.

MOTORS: All motos operate at 1750 RPM. Single phase (115/230v.) capacitor type motors have built-in thermal overload protection. Three phase (208-230/460v.) motors are furnished with magnetic starters, mounted and wired on the unit, with overload relays for the motors.

FLOAT SWITCH: Enclosed automatic float switch with adjustable float travel and seamless copper float furnished for each motor.

PUMP: Double suction, peripheral, regenerative, turbine type pump, bronze fitted, with stainless steel shaft and brass screen strainer. Will not vapor-lock even when handling water at 210°F.

SINGLE UNIT: Consists of one receiver, one pump and motor unit and one float switch (plus one magnetic starter where required).

DUPLEX UNIT: Consists of one receiver, two pump and motor units and two float switches (plus two magnetic starters where required). An automatic alternating float switch can be furnished on duplex units, in place of the two standard float switches.

MODIFICATIONS

COMBINATION STARTERS with non-fusible or fusible disconnect switches or with circuit breakers; other special starters.

A MECHANICAL ALTERNATING FLOAT SWITCH instead of standard float switches for duplex units to automatically alternate cycles of operation as well as starting the second pump for extra capacity under peak load conditions.

AUTOMATIC ELECTRICAL ALTERNATOR, which performs the same function as the mechanical alternator.

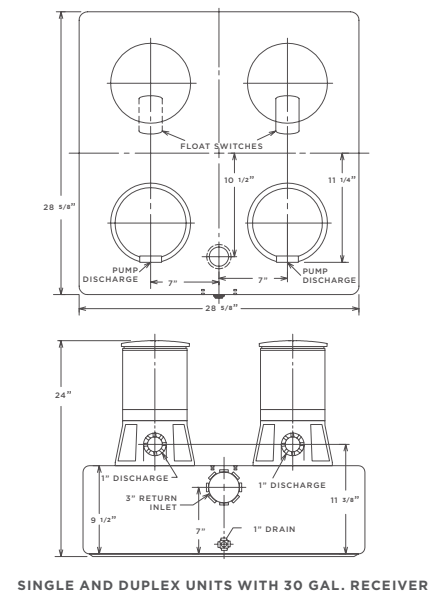
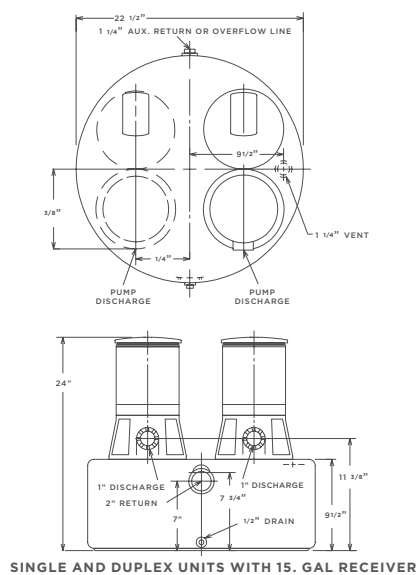
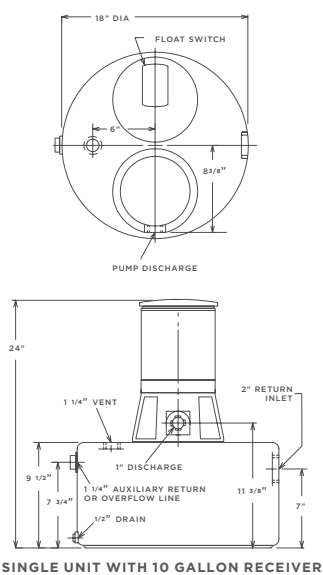
Type **VTC** condensation return unit can be furnished as a type **VTC-BF AUTOMATIC BOILER FEED UNIT** by substituting cold water make-up valve assembly for float switch and actuating pump motor by a boiler water level controller.

Motors, switches, starters and interconnecting wiring for locations requiring **WATERTIGHT, EXPLOSION-PROOF** or other special equipment.

Air-tight sealing of unit for pumping condensate into system operating under **VACUUM**.

STEEL RECEIVERS are available in lieu of the standard cast iron receivers, and 30-gallon steel or cast iron receivers are available in lieu of the standard 10-gallon and 15-gallon receivers.

Selection Table								
Unit No.	Max. Sq. Ft. Direct Radiation	Equiv. Boiler H.P.	Radiation will Condense G.P.M.	Pump Capacity G.P.M.	Disch. Press. at Pump Psi	Motor H.P. 1750 R.P.M.	Receiver Gal. Single	Receiver Gal. Duplex
VTC-110-4	1000	7.2	0.5	1.5	10	0.25	10	15
VTC-120-4	1000	7.2	0.5	1.5	20	0.25	10	15
VTC-130-4	1000	7.2	0.5	1.5	30	0.25	10	15
VTC-140-4	1000	7.2	0.5	1.5	40	0.33	10	15
VTC-150-4	1000	7.2	0.5	1.5	50	0.33	10	15
VTC-210-4	2000	14.5	1	3	10	0.25	10	15
VTC-220-4	2000	14.5	1	3	20	0.25	10	15
VTC-230-4	2000	14.5	1	3	30	0.25	10	15
VTC-240-4	2000	14.5	1	3	40	0.33	10	15
VTC-250-4	2000	14.5	1	3	50	0.33	10	15
VTC-410-4	4000	29	2	6	10	0.25	10	15
VTC-420-4	4000	29	2	6	20	0.25	10	15
VTC-430-4	4000	29	2	6	30	0.33	10	15
VTC-440-4	4000	29	2	6	40	0.5	10	15
VTC-450-4	4000	29	2	6	50	0.75	10	15
VTC-610-4	6000	43	3	9	10	0.25	10	15
VTC-620-4	6000	43	3	9	20	0.33	10	15
VTC-630-4	6000	43	3	9	30	0.5	10	15
VTC-640-4	6000	43	3	9	40	0.75	10	15
VTC-650-4	6000	43	3	9	50	0.75	10	15
VTC-810-4	8000	58	4	12	10	0.25	15	15
VTC-820-4	8000	58	4	12	20	0.33	15	15
VTC-830-4	8000	58	4	12	30	0.5	15	15
VTC-840-4	8000	58	4	12	40	0.75	15	15
VTC-1010-4	10000	72	5	15	10	0.33	15	15
VTC-1020-4	10000	72	5	15	20	0.5	15	15
VTC-1030-4	10000	72	5	15	30	0.75	15	15
VTC-1040-4	10000	72	5	15	40	0.75	15	15



ADDRESS: 1144 Utica Avenue, Brooklyn, NY 11203 TEL: (718) 451-2000 URL: federalpumps.com