

TYPE

.....
MF

PACKAGED SEWAGE PUMP UNITS



Capacities to 100 gpm, Heads to 24',
1750 operation, 3/4 horsepower, 3"
discharge. Simplex and duplex sets.

HIGHLIGHTS

- ☞ Handles up to 3 Water Closets where Gravity Drainage is Impractical
- ☞ Screenless 3" Non-Clog Sewage Pump
- ☞ Completely Factory Assembled
- ☞ For Basement or Playroom Toilet
- ☞ Passes Through Doorway

FEATURES

Pump: Full 3" Non-Clog Sewage Pump, with 2-vane open type, impeller designed to handle all sewage and stringy material. Has bronze lower bearing to eliminate vibration, and ball thrust bearing set in motor pedestal, factory lubricated for life. Heavy cast iron motor pedestal rabbetted to insure perfect alignment of pump and motor. Flexible coupling insures quiet vibrationless operation.

Shaft: Carbon steel, ground and polished, sized for maximum load.

Motor: .75 H.P., 1750 rpm standard NEMA frame motors. Single phase, 60cy., 115/230v. Motors are capacitor type with built in overload protection. Where 3 phase motors are required, they are furnished with magnetic starters.

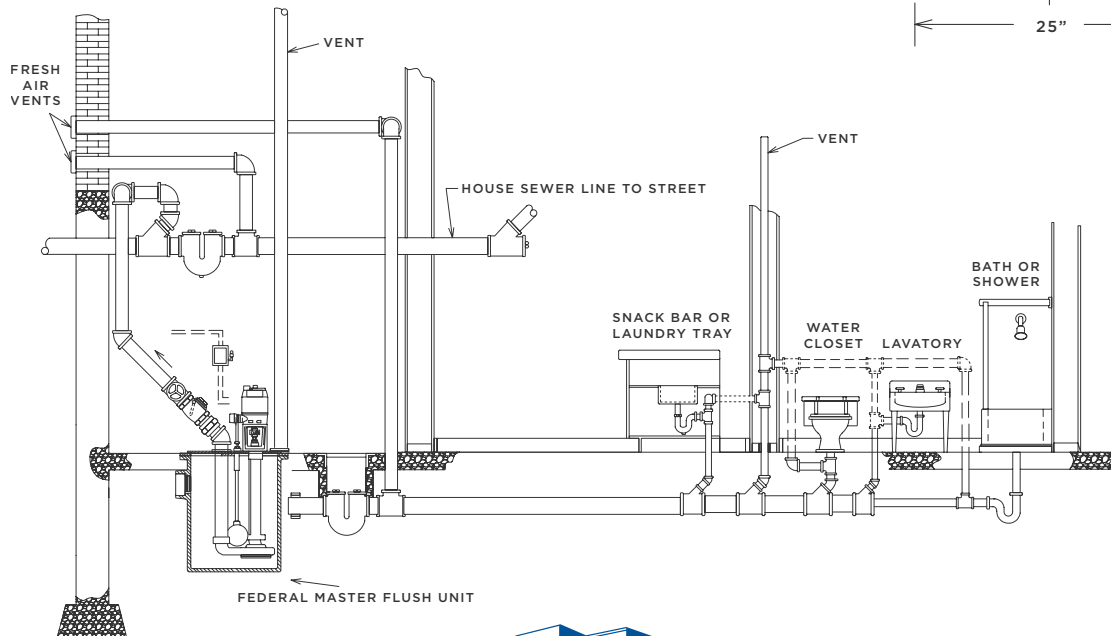
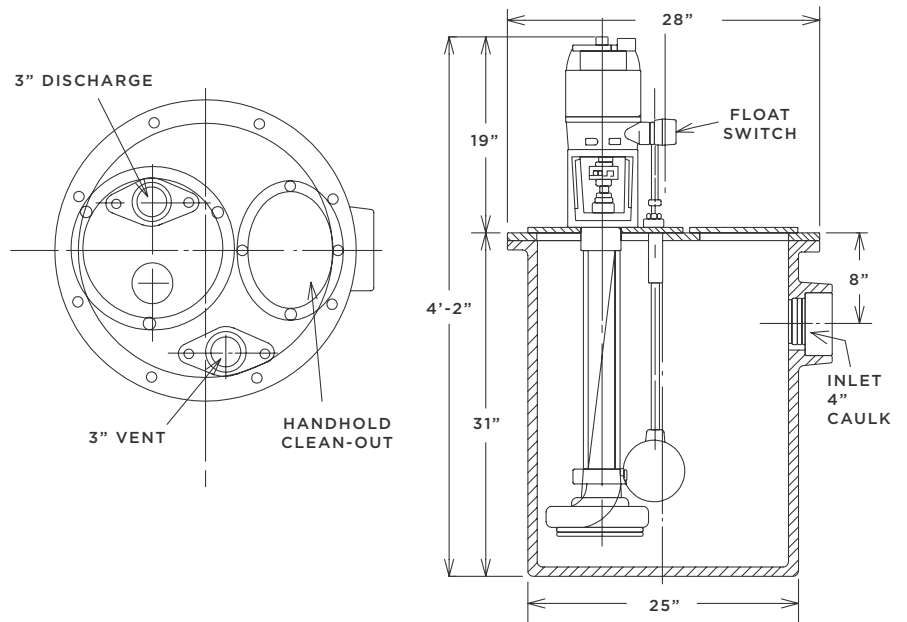
Control: An integral float switch assembly, complete with copper float, brass rod and easily adjustable

float stops. Duplex units can be furnished with either two standard float switches or one alternating float switch assembly to alternate the cycles of operation and provide two-pump simultaneous operation when required by heavy inflow.

Basin: Fiberglass basins are standard with Master-Flush units. Steel basins with welded steel covers are also available. Basins have 4" caulk inlet connection, 3" vent connection, and large handhole for easy access. Pump and motor unit is easily removable without disturbing the basin cover.

Dimensions: Simplex Unit is 24" diameter by 30" deep with a 28" diameter cover. Duplex cover is 30" diameter by 30" deep with a 34" diameter cover.

Performance Table			
Unit	Horse Power	Capacity GPM	Head in Feet
Master Flush	3/4	25	24
		50	20
		75	15
		100	10



ADDRESS: 1144 Utica Avenue, Brooklyn, NY 11203 TEL: (718) 451-2000 URL: federalpumps.com