

TYPE







.....
MCH

CONDENSATION RETURN UNITS



Hot condensate return units. 1/3, 1/2, and 3/4 HP. 6 and 10 gallon steel receivers.

HIGHLIGHTS

-  For hot condensate from radiators
-  For hot condensate from unit heaters
-  For hot condensate from process machinery
-  Factory assembled unit
-  Easy installation and simple maintenance
-  Pump and switch removable without disconnecting inlet piping

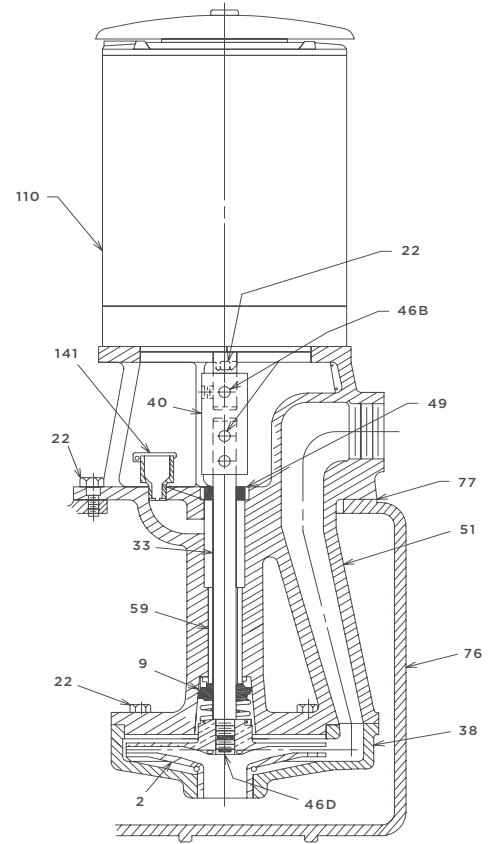
FEATURES

TANK: Heavy welded steel. No foundation bolts are required.

PUMP: Bronze-fitted centrifugal pump design assures long operating life without loss of efficiency. Stainless steel shaft, bronze guide bearing, protected by mechanical shaft seal. Single piece cast iron construction insures vibrationless operation.

MOTOR: 3450 RPM , single phase, 60 cycle, 115V. or 230V., with built in overload protection, in drip proof enclosure. 115V. motors have integral extension cord and grounded plug. 230V. motors have terminal for power wiring.

FLOAT SWITCH: Fully enclosed automatic on-off float switch mounted on motor operated by stainless steel float and rod.



| Selection Table | | | | | | |
|-----------------|----------------------------------|----------------------------|-----------------|------------------------------|------------------------|---------------------------|
| Unit Number | Maximum Sq. Ft. Direct Radiation | Rad'n Will Condense G.P.M. | Pump Cap G.P.M. | Disch. Press. At Pump P.S.I. | Motor H.P. 3450 R.P.M. | Receiver Capacity Gallons |
| MCH-120-2 | 1000 | 0.5 | 1-5 | 20 | 0.33 | 6 |
| MCH-130-2 | 1000 | 0.5 | 1-5 | 30 | 0.5 | 6 |
| MCH-140-2 | 1000 | 0.5 | 1-5 | 40 | 0.75 | 6 |
| MCH-220-2 | 2000 | 1 | 3 | 20 | 0.33 | 6 |
| MCH-230-2 | 2000 | 1 | 3 | 30 | 0.5 | 6 |
| MCH-240-2 | 2000 | 1 | 3 | 40 | 0.75 | 6 |
| MCH-420-2 | 4000 | 2 | 6 | 20 | 0.33 | 6 |
| MCH-430-2 | 4000 | 2 | 6 | 30 | 0.5 | 6 |
| MCH-440-2 | 4000 | 2 | 6 | 40 | 0.75 | 6 |
| MCH-620-2 | 6000 | 3 | 9 | 20 | 0.33 | 6 |
| MCH-630-2 | 6000 | 3 | 9 | 30 | 0.5 | 6 |
| MCH-640-2 | 6000 | 3 | 9 | 40 | 0.75 | 6 |
| MCH-820-2 | 8000 | 4 | 12 | 20 | 0.33 | 10 |
| MCH-830-2 | 8000 | 4 | 12 | 30 | 0.5 | 10 |
| MCH-840-2 | 8000 | 4 | 12 | 40 | 0.75 | 10 |
| MCH-1020-2 | 10000 | 5 | 15 | 20 | 0.33 | 10 |
| MCH-1030-2 | 10000 | 5 | 15 | 30 | 0.5 | 10 |
| MCH-1040-2 | 10000 | 5 | 15 | 40 | 0.75 | 10 |

| Parts List | | | |
|-------------|--------------------------|----------|-----------|
| Part Number | Name | Required | Material |
| 2 | IMPELLER | 1* | BRONZE |
| 9 | MECHANICAL SHAFT SEAL | 1* | VARIOUS |
| 22 | CAP SCREW | 2 | STEEL |
| 33 | SHAFT | 1* | ST. ST. |
| 38 | SUCTION PLATE | 1 | CAST IRON |
| 40 | COUPLING | 1* | STEEL |
| 46B | SET SCREW | 4 | STEEL |
| 46D | IMPELLER SET SCREW | 1* | STEEL |
| 49 | SHAFT SEAL | 1* | VARIOUS |
| 51 | CASING ASSEMBLY | 1 | CAST IRON |
| 59 | LOWER BEARING | 1* | BRONZE |
| 67 | SET SCREW | 1 | STEEL |
| 71A | FLOAT SWITCH* | 1 | VARIOUS |
| 72 | FLOAT ROD & STOPS* | 1-SET | ST. ST. |
| 75 | FLOAT* | 1* | ST. ST. |
| 76 | RECEIVER-6 GAL. STEEL | 1 | STEEL |
| 76 | RECEIVER-10 GALLON STEEL | 1 | STEEL |
| 77 | GASKET | 1* | RUBBER |
| 110 | MOTOR | 1 | VARIOUS |
| 141 | OIL CUP | 1 | STEEL |

* Recommended spare parts to be carried in stock.

| Dimensions Table | | | | | | | |
|---------------------------|------------|------------------|-----------|-------------|-------------|--------------------|--------------------|
| Receiver Capacity Gallons | Inlet size | Pump Disch. Size | Vent Size | Floor Space | Unit Height | Inlet C. L. Height | Disch. C.L. Height |
| 6 | 1.5 | 1.25 | 1 | 12-.25SQ. | 22 | 7 | 11.5 |
| 10 | 2 | 1.25 | 1.25 | 16-.25SQ. | 22 | 7 | 11.5 |

* All dimensions are in inches unless otherwise noted. Do not use dimensions shown for construction purposes unless certified.



ADDRESS: 1144 Utica Avenue, Brooklyn, NY 11203 TEL: (718) 451-2000 URL: federalpumps.com

All images and information contained in this booklet are the sole property of The Federal Pumps Corporation, and may not be reproduced without written permission.