

TYPE




.....  
**CCF/CGF/CKF**  
**CCL/CGL/CKL**  
**CCY/CGY/CKY**

**VERTICAL CLOSED-COUPLED PUMPS**



Flows to 300 gpm, Heads to 375 feet, 1/4 thru 40 hp, discharge size 1" thru 2 1/2", with 3450 & 1750 operation.

**HIGHLIGHTS**

-  Vertical Close-Coupled Pumps
-  Back Pull-Out Design
-  Centerline Discharge

## FEATURES

**CASING:** Standard pumps are built with the suction connection 180 degrees from the discharge connection. Casings can be field rotated for 90 degree position changes. Suction and discharge connections are standard ASA flanges. Top pull-out design permits removal of the rotating assembly without disconnecting suction and discharge piping. Centerline discharge permits straight-through piping.

**IMPELLER:** Single piece enclosed bronze balanced impellers, with diameters cut for specified condition points.

**SHAFT:** The pump end is mounted on the motor shaft, eliminating alignment problems. A bronze shaft sleeve prevents contact between the shaft and the liquid being pumped.

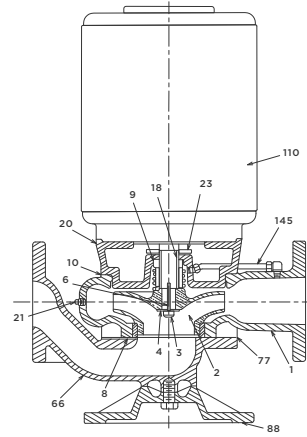
**MECHANICAL SHAFT SEAL:** A leakless mechanical shaft seal is standard on all models with ceramic and carbon faces, and stainless steel metal parts. A copper bypass line flushes the seal chamber to prevent dead-ending of abrasives.

**MOTORS:** Pumps are built with standard NEMA frame drip-proof motors. Totally enclosed and explosion proof motors are available, as options. Fractional horsepower single phase motors have built-in overload protection. All other motors should be provided with magnetic starters.

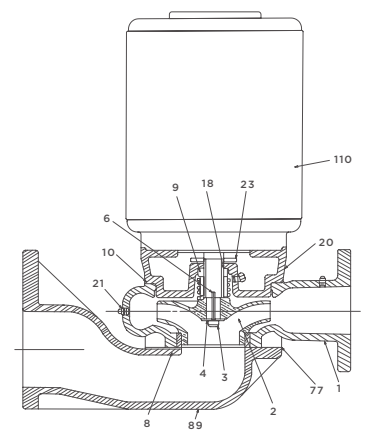
**MODIFICATIONS:** Standard pumps are bronze-fitted. Liquid ends can be furnished in all-bronze or all-iron construction, as options. These pumps are also available in close-coupled horizontal style and in flexible coupled horizontal style.

**MODEL NUMBERS:** Example 3CGF-10-2; 3 is the pump discharge size (3 inches); CG is the impeller diameter range (CC -small diameter, CG -medium diameter, CK -large diameter); F is the mounting style (F-flange mounted, L-inline mounted, Y-floor mounted ); 10 is the motor horsepower; 2 is the motor speed (2-pole 3450 rpm, 4-pole 1750 rpm)

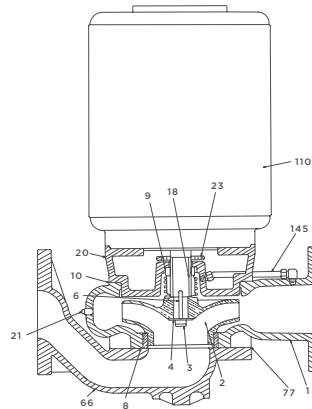
**NOTE:** Construction of CCF, CCL and CCY models varies somewhat from the construction described for the other models.



**TYPE CGY & CKY  
FLOOR MOUNTED PUMPS**



**TYPE CGF & CKF  
FLANGE MOUNTED PUMPS**



**TYPE CGL & CKL  
IN-LINE MOUNTED PUMPS**

### Parts List

NO.	NAME	REQD.	BRONZE FITTED	ALL IRON	ALL BRONZE
1	CASING	1	CAST IRON	CAST IRON	BRONZE
2	IMPELLER	1	BRONZE	CAST IRON	BRONZE
3	IMPELLER LOCK SCREW	1*	ST. ST.	ST. ST.	ST. ST.
4	IMPELLER WASHER	1*	ST. ST.	ST. ST.	ST. ST.
6	IMPELLER KEY	1*	ST. ST.	ST. ST.	ST. ST.
8	CASING WEARING RING-SEE NOTE (B)	1*	BRONZE	CAST IRON	BRONZE
9	MECHANICAL SHAFT SEAL	1*	VARIOUS	VARIOUS	VARIOUS
10	CASING GASKET	1*	VELUMOID	VELUMOID	VELUMOID
18	SHAFT SLEEVE	1*	BRONZE	ST. ST.	BRONZE
19	VENT COCK (A)	1	BRASS	STEEL	BRASS
20	PUMP BRACKET	1	CAST IRON	CAST IRON	BRONZE
21	PLUG	-	CAST IRON	CAST IRON	BRASS
22	CAP SCREW (A)	-	STEEL	STEEL	BRASS
23	FLINGER	1*	RUBBER	RUBBER	RUBBER
39	STUD (C)	1	STEEL	STEEL	STEEL
46	IMPELLER SET SCREW	1*	ST. ST.	ST. ST.	ST. ST.
50	NUT (C)	1	STEEL	STEEL	STEEL
66	SUCTION ADAPTER	1*	CAST IRON	CAST IRON	BRONZE
77	SUCTION GASKET	1*	RUBBER	RUBBER	RUBBER
88	FLOOR STAND (C)	1	CAST IRON	CAST IRON	CAST IRON
89	SUCTION BRACKET	1*	CAST IRON	CAST IRON	BRONZE
110	MOTOR	1	VARIOUS	VARIOUS	VARIOUS
145	SEAL BY-PASS ASSEMBLY	1	COP. -BRASS	PLAS. -STEEL	COP. -BRASS

\* Recommended spare parts to be carried in stock.

A: Not shown

B: Standard on CKF pumps. Optional on CCF & CGF pumps.

C: CC construction varies somewhat from standard construction shown for CG and CK pumps.



**ADDRESS:** 1144 Utica Avenue, Brooklyn, NY 11203 **TEL:** (718) 451-2000 **URL:** federalpumps.com

All images and information contained in this booklet are the sole property of The Federal Pumps Corporation, and may not be reproduced without written permission.