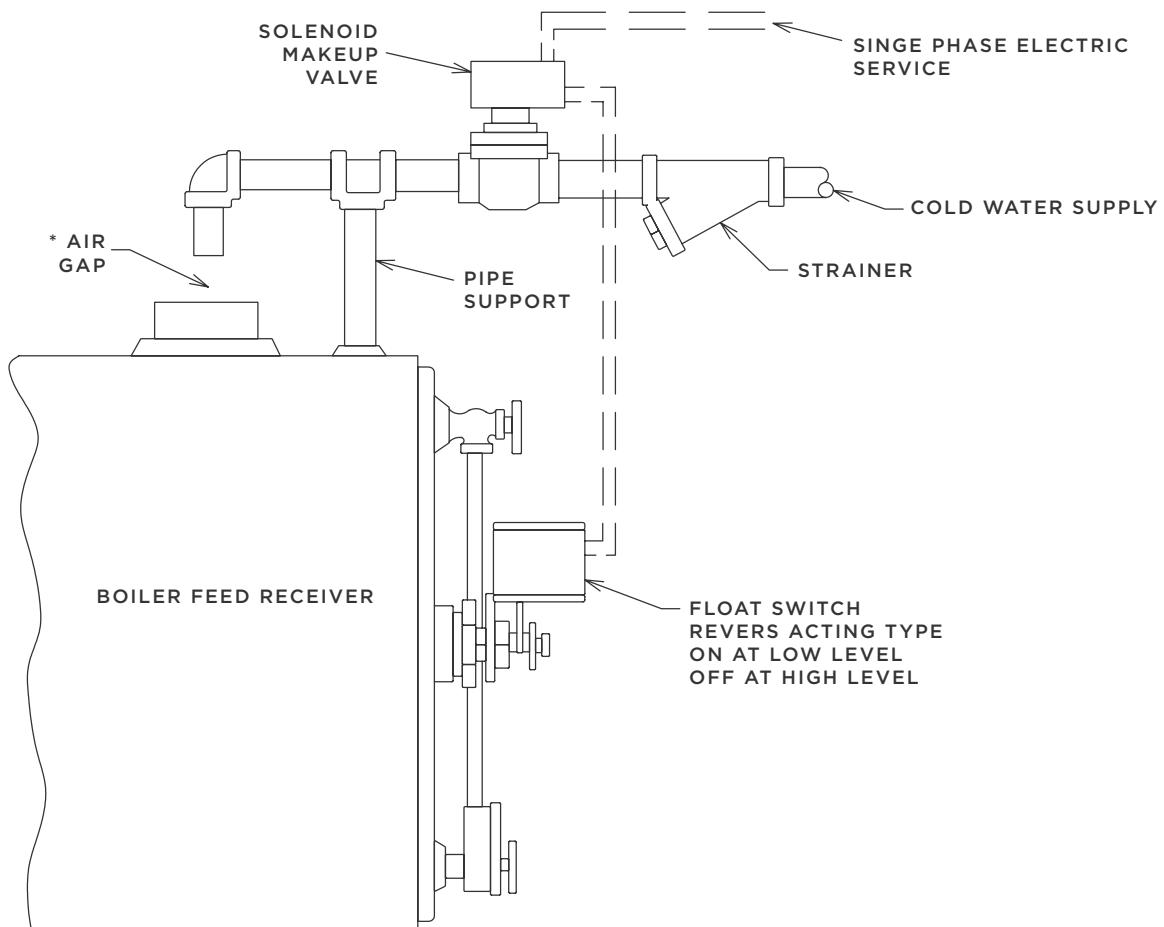


Diagram



* AIR GAP, REQ'D AS PER REVISED NYC CODE



Supplemental # 0210

ADDRESS: 1144 Utica Avenue, Brooklyn, NY 11203 TEL: (718) 451-2000 URL: federalpumps.com

All images and information contained in this booklet are the sole property of The Federal Pumps Corporation, and may not be reproduced without written permission.

Specifications

Furnish and install as shown on-plans, a Federal Pump Corporation type BFC duplex boiler feed unit sized to provide feed water to one boiler. Each pump shall be sized as shown in the pump schedule.

The unit shall be factory assembled by the pump manufacturer, including the feed water receiver, pump and motor units, and accessories mounted on a steel base with pump suction piping complete.

Pumps shall be close-coupled, end suction, bronze-fitted centrifugal type, with centerline discharge for automatic venting. Back pullout design shall permit removal of the motor and rotating assembly without disturbing piping.

Each pump shall have an enclosed balanced bronze impeller, mechanical shaft seal and copper by-pass from the pump discharge into the seal chamber. Pumps shall be close-coupled to standard NEMA JM-frame motors in open, drip-proof enclosures, rated as shown in the pump schedule.

Furnish a magnetic starter for each motor with overload protection on each phase and a hand-off-automatic selector switch. Furnish a transfer switch to permit manual selection of the lead pump. Starters and transfer switch shall be factory mounted on the unit and wired to the motors.

The pumps shall be controlled by a boiler water level controller mounted on the boiler, as herein specified. The feed water receiver shall be of heavy steel construction with convex heads, gauge glass, thermometer, and connections for return, vent and drain. A makeup water valve, flange mounted on the tank head, shall be all-bronze, float operated type with strainer. The receiver capacity shall be as shown in the pump schedule.

Pump Schedule:

No. of Boilers: 1 No. of Pumps: 2

Unit Model Number: BFC-

Pumps: _____ GPM per pump _____ PSI discharge pressure

Motors: _____ HP _____ RPM _____ Phase, 60 cycles, _____ volts

Receiver: _____ gallon capacity

Project:



Supplemental # 0210

ADDRESS: 1144 Utica Avenue, Brooklyn, NY 11203 **TEL:** (718) 451-2000 **URL:** federalpumps.com

All images and information contained in this booklet are the sole property of The Federal Pumps Corporation, and may not be reproduced without written permission.

Specifications

Furnish and install as shown on plans, a Federal Pump Corporation type BFC triplex boiler feed unit sized to provide feed water to two boilers. Each pump shall be sized as shown in the pump schedule.

The unit shall be factory assembled by the pump manufacturer, including the feed water receiver, pump and motor units, and accessories mounted on a steel base with pump suction piping complete. Pumps shall be close-coupled, end suction, bronze-fitted centrifugal type, with centerline discharge for automatic venting. Back pullout design shall permit removal of the motor and rotating assembly without disturbing piping.

Each pump shall have an enclosed balanced bronze impeller, mechanical shaft seal and copper by-pass from the pump discharge into the seal chamber. Pumps shall be close-coupled to standard NEMA JM-frame motors in open, drip-proof enclosures, rated as shown in the pump schedule. Furnish a magnetic starter for each motor with overload protection on each phase and a hand-off-automatic selector switch.

Pump no. 1 shall feed boiler no. 1 and pump no. 2 shall feed boiler no. 2. A manual transfer switch shall permit pump no. 3 to act as standby for either pump no. 1 or pump no. 2. Starters and transfer switch shall be factory mounted on the unit and wired to the motors. The pumps shall be controlled by a boiler level controller mounted on each boiler, as herein specified.

The feed water receiver shall be of heavy steel construction with convex heads, gauge glass, thermometer, and connections for return, vent and drain. A makeup water valve, flange mounted on the tank head, shall be all-bronze, float operated type with strainer. The receiver capacity shall be as shown in the pump schedule.

Pump Schedule:

No. of Boilers: 2 No. of Pumps: 3

Unit Model Number: BFC-

Pumps: _____ GPM per pump _____ PSI discharge pressure

Motors: _____ HP _____ RPM _____ Phase, 60 cycles, _____ volts

Receiver: _____ gallon capacity

Project: _____



Supplemental # 0210

ADDRESS: 1144 Utica Avenue, Brooklyn, NY 11203 **TEL:** (718) 451-2000 **URL:** federalpumps.com

All images and information contained in this booklet are the sole property of The Federal Pumps Corporation, and may not be reproduced without written permission.