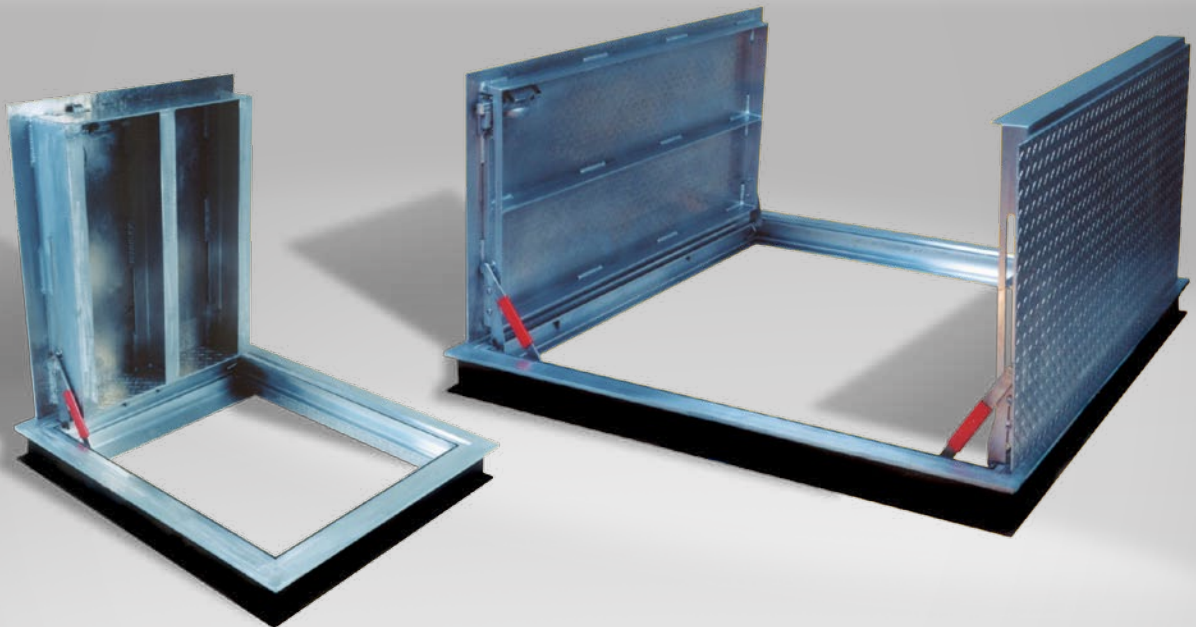


TYPE

PIT COVERS






.....

ACCESS DOORS



Single and double leaf designs
available in steel and aluminum.
Includes grouting frame. Use with
quick disconnect pumps.

HIGHLIGHTS

-  Available in Single and Double Leaf Doors
-  Diamond-plate Steel or Alluminum Construction
-  Vinyl-Grip Handle
-  Automatic Hold-Open Positioning
-  Load Rating from 150-300 lbs./sq. ft.

FEATURES

TYPE Q Single-leaf, non-watertight design. 1/4" steel angle frame with strap anchors bolted to the exterior. Leaf is 1/4" diamond steel plate with cast steel hinges bolted to the underside pivoting on torsion bars. The door opens to 90 degrees and locks in that position; vinyl grip handle for closing. Live load rating is 150 pounds per square foot. The door is equipped with snap lock and removable handle and has a prime coat of red oxide paint.

TYPE K Single-leaf, non-watertight design. 1/4" extruded aluminum frame with built-in neoprene cushion and strap anchors bolted to the exterior. Leaf is 1/4" diamond aluminum plate with aluminum stiffeners. Cast steel hinges are bolted to the underside and pivot on torsion bars. The door opens to 90 degrees and locks in that position; vinyl grip handle for closing. Live load rating is 150 pounds per square foot. The door is equipped with snap lock and removable handle and has mill finish bituminous coating on the exterior of the frame. Hardware is cadmium plated.

TYPE KD Double-leaf, non-watertight design. 1/4" extruded aluminum frame with built-in neoprene cushion and strap anchors bolted to the exterior. Leaf is 1/4" diamond aluminum plate with aluminum stiffeners. Cast steel hinges are bolted to the underside and pivot on torsion bars. The doors open to 90 degrees and lock in that position; vinyl grip handle for closing. Live load rating is 150 pounds per square foot. The doors are equipped with snap lock and removable handle and has mill finish bituminous coating on the exterior of the frame. Hardware is cadmium plated.

TYPE J Single-leaf watertight design. 1/4" diamond steel leaf. 1/4" channel steel frame with anchor flanged around the perimeter. Live load rating is 300 pounds per square foot. The door has brass hinges, stainless steel pins, spring operators, automatic hold-open arm with release handle and a snap lock. A 1-1/2" drainage coupling is located at the front right corner of the frame. Hardware is cadmium plated. Leaf and frame are prime coated with red oxide.

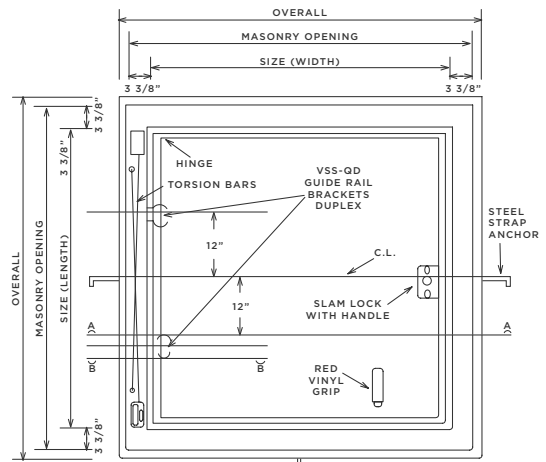
TYPE JD Double-leaf watertight design. 1/4" diamond steel leaf. 1/4" channel steel frame with anchor flanged around the perimeter. Live load rating is 300 pounds per square foot. The doors have brass hinges, stainless steel pins, spring operators, automatic hold-open arm with release handle and a snap lock. A 1-1/2" drainage coupling is located at the front right corner of the frame. Hardware is cadmium plated. Leaf and frame are prime coated with red oxide.

TYPE J-AL Single-leaf, watertight design. 1/4" diamond aluminum leaf. 1/4" channel aluminum frame with anchor flanged around the perimeter. Live load rating is 300 pounds per square foot. The door has brass hinges, stainless steel pins, spring operators, automatic hold-open arm with release handle and a snap lock. Leaf and frame are mill finish with bituminous coating on the exterior of the frame.

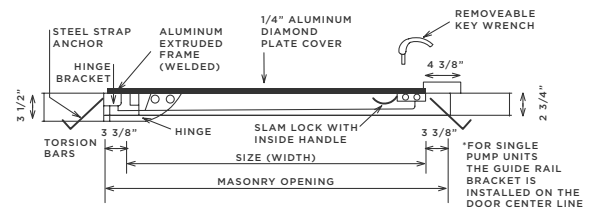
TYPE JD-AL Double-leaf, watertight design. 1/4" diamond aluminum leaf. 1/4" channel aluminum frame with anchor flanged around the perimeter. Live load rating is 300 pounds per square foot. The doors have brass hinges, stainless steel pins, spring operators, automatic hold-open arm with release handle and a snap lock. Leaf and frame are mill finish with bituminous coating on the exterior of the frame.

NOTE: All access doors include factory-installed VSS-QD brackets as required.

SINGLE LEAF

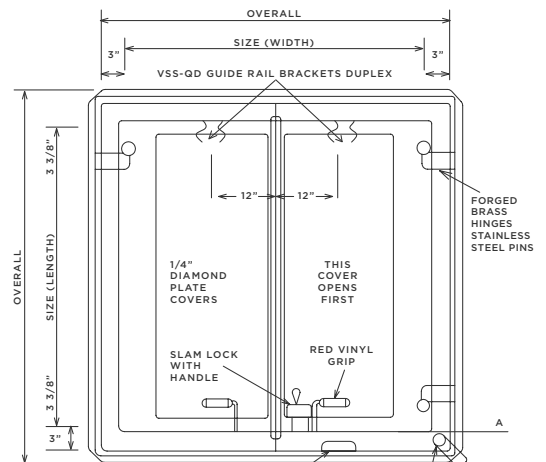


Plan View

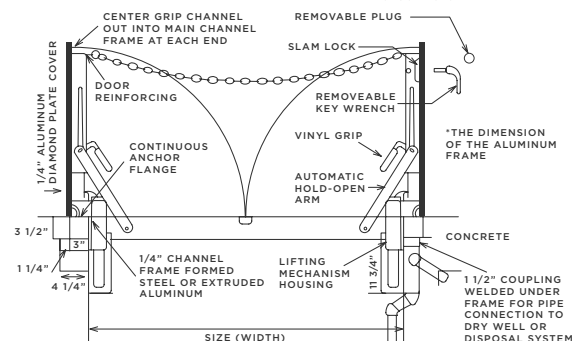


Section A-A

DOUBLE LEAF



Plan View



Section A-A
(COVERS IN OPEN POSITION)

